

Catatan 3



Entity Relationship Diagram (ERD)

(Penggunaan Power Designer)

(Latihan Studi Kasus)



Buat ERD

Model Cardinality ratio dan total participation

Diketahui sebuah entity sebagai berikut:

1. MHS(nim,nama,jurusan)
2. KRS(nim,kodemk,status)
3. MK(kd_mk,nama_mk,sks)
4. KHS(nim,kodematakuliah,nilai)

Tentukan terlebih dulu PK tiap entity

Tentukan relasi tiap entity, agar terbentuk skema yang jelas

Tentukan PK

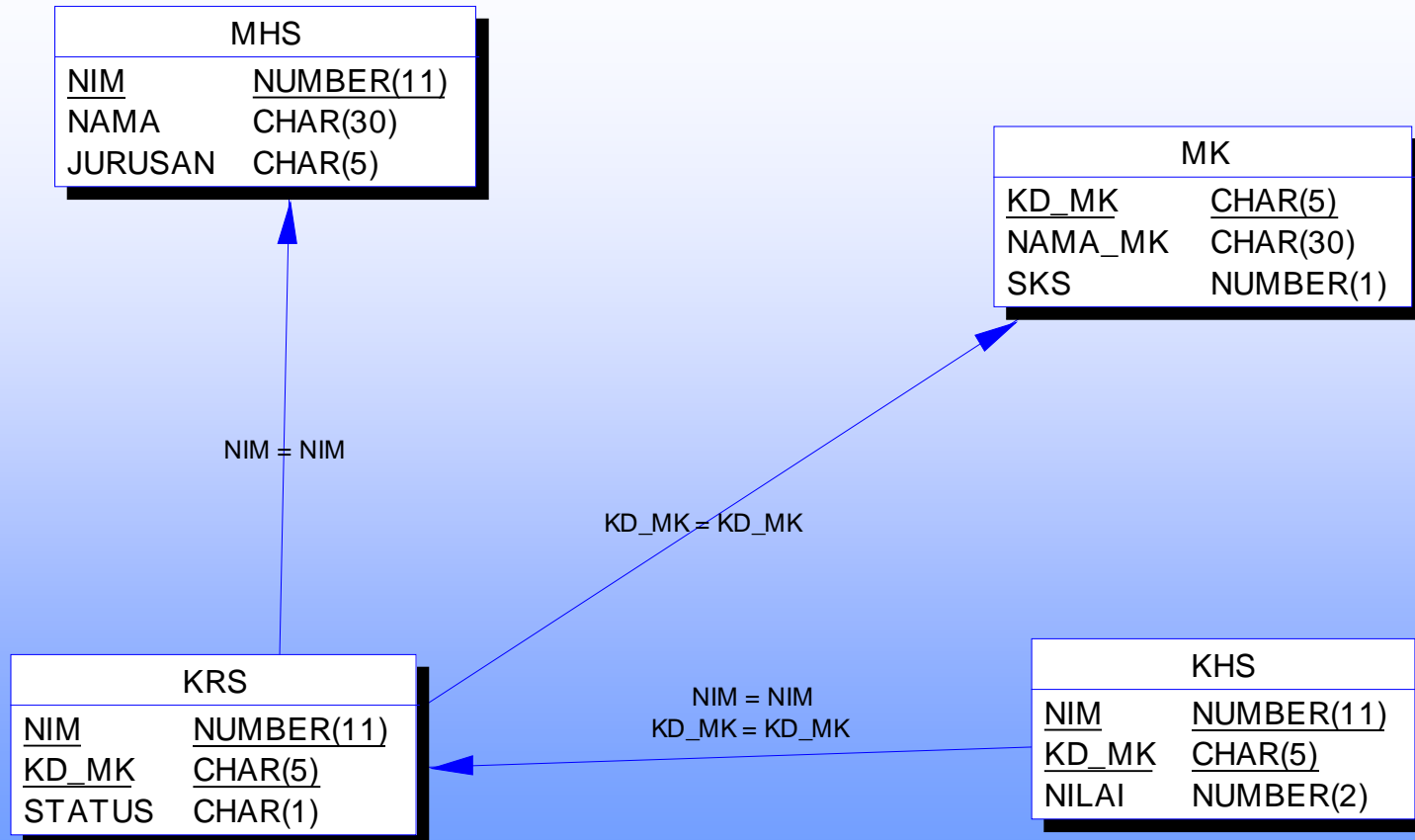
Diketahui sebuah entity sebagai berikut:

1. MHS(nim,nama,jurusan)
2. KRS(nim,kodemk,status)
3. MK(kd_mk,nama_mk,sks)
4. KHS(nim,kodematakuliah,nilai)

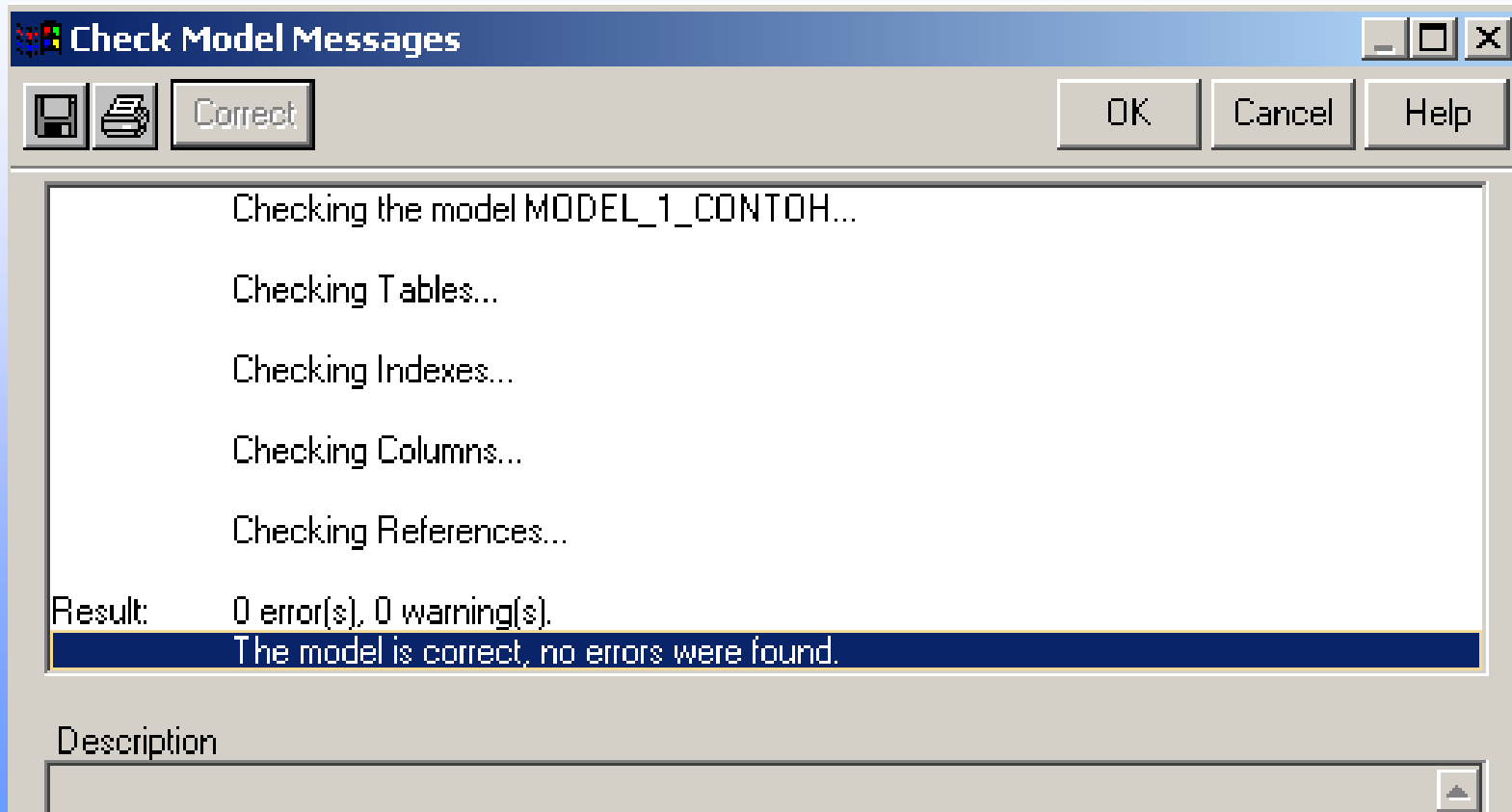
Buat ERD PDM

1. ERD PDM harus menghasilkan ERD atau skema seperti table-table yang telah diketahui.
2. Perhatikan dgn baik PK tiap table

Physical Data Model		
Project : CONTOH PERTEMUAN 5		
Model : Model_1 CONTOH		
Author : LUS	Version	9/19/2005

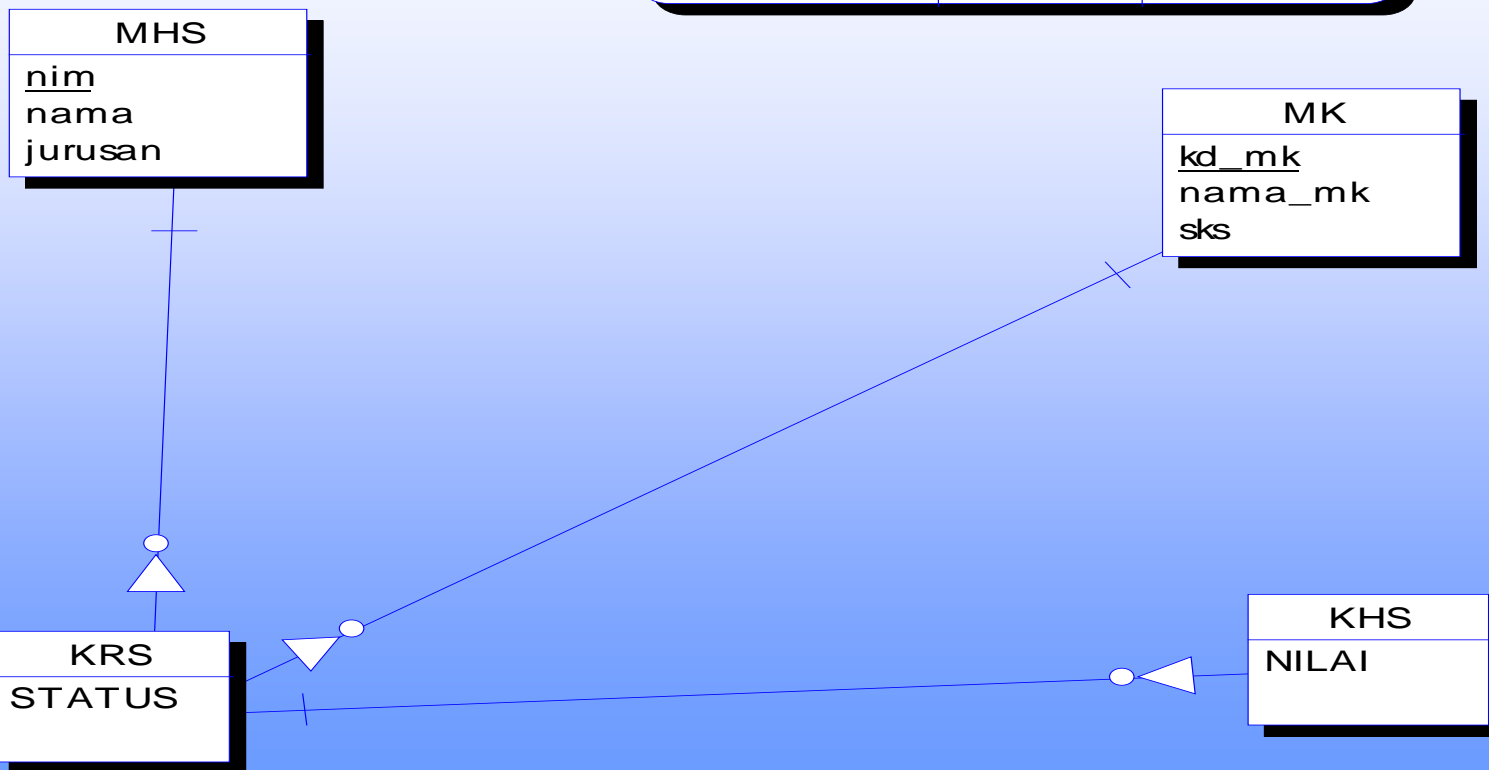


Check Model ERD PDM



ERD CDM

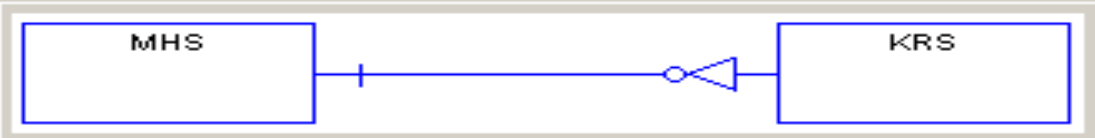
Conceptual Data Model		
Project : CONTOH PERTEMUAN 5		
Model : Model_1 CONTOH		
Author : LUS	Version	9/19/2005



Relasi MHS dan KRS

Relationship Properties

Definition | Description | Annotation



MHS KRS

Name: Ref_166 Code: REF_166

Label:

Cardinality

One to One One to Many Many to One Many to Many

"MHS" to "KRS"

Mandatory Dependent Dominant Min: 0 Max: n

Role:

"KRS" to "MHS"

Mandatory Dependent Dominant Min: 1 Max: 1

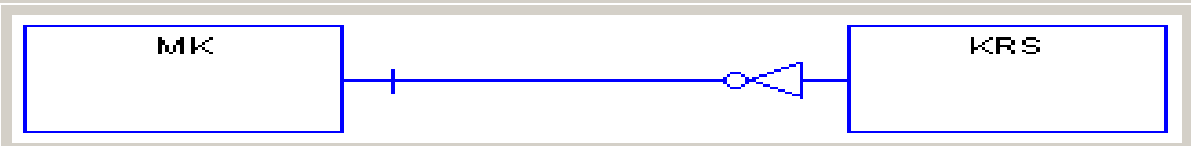
Role:

Rules Generate

Relasi MK dan KRS

Relationship Properties

Definition | Description | Annotation



Name: = Code: =

Label:

Cardinality

One to One
 One to Many
 Many to One
 Many to Many

"MK" to "KRS"

Mandatory
 Dependent
 Dominant
 Min:
 Max:

Role:

"KRS" to "MK"

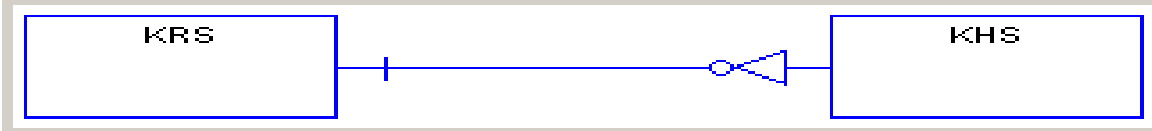
Mandatory
 Dependent
 Dominant
 Min:
 Max:

Role:

Relasi KRS dan KHS

Relationship Properties [X]

Definition | Description | Annotation



KRS
KHS

Name: = Code: =

Label:

Cardinality

One to One
 One to Many
 Many to One
 Many to Many

"KRS" to "KHS"

Mandatory
 Dependent
 Dominant
 Min: Max:

Role:

"KHS" to "KRS"

Mandatory
 Dependent
 Dominant
 Min: Max:

Role:

Rules Generate

Conceptual Data Model		
Project : CONTOH PERTEMUAN 5		
Model : Model_1 CONTOH		
Author : LUS	Version	9/19/2005

Check Model Messages

Save Print Correct OK Cancel Help

Checking the model MODEL_1_CONTOH...

Checking Data Items...

Checking Entities...

Checking Relationships...

Checking Inheritances...

Result: 0 error(s), 0 warning(s).

The model is correct, no errors were found.